

**The title and name of your group or organisation**

Mangapārae Papakainga/ Titirangi Waka Ama and Wellbeing Charitable Trust

Te Papatipu O Mangapārae project

**Date of report submission:**

09/12/2024

**Progress against agreed project purpose and deliverables and key outcomes, made possible by the Grant**

Our program for 2024 achieved significant outcomes largely as a result of community participation, volunteers support and the overall tautoko of our hapu and marae whanau. This support allowed us to complete our wetland restoration program, remove significant areas of weed and pests and engage with our stakeholders and neighbours who control our surrounding environments to also remove pests. Our wananga series also involved many local whanau and empowered our community to write submissions, participate in our wider hapu ecological planning program and they also helped to complete our funding application to WWF for 2025 which in this case was unsuccessful. We hope to apply again in 2026.

Together with the wider community and hapu, we reintroduced weka, Ngutukaka, and various tuna to our awa. Mangapārae is a very short period is now a haven for endangered species and supports native fish, birds, and other wildlife populations. These benefits now flow into the wider ecological area, as the Mangapārae wetland connects to the Mangatu and Waipaoa rivers.

**Lessons learned, innovations and next steps**

Next project focus: Whanau and marae engagement and education for our hunters, forestry whanau, horse riders, etc to document and report Koekoeā in our project rohe: Kārearea have been documented Koekoeā were observed around our project rohe the project: report sighting our rohe including Maungahaumi Areoma. Wananga at Mangatu Marae to create awareness and provide each whanau with data and reporting APP.

We will employ Mangapārae taiao, project manager and pest control co-ordinator, Kārearea and Koekoeā researcher/data coordinator.

In addition, we will also build and develop our unique and hapu specific Ewe whenua map: Whānau wananga collaborative mapping of waterways, kainga and whānau. Whānau to provide historical detail of whanau living along our awa, their kainga and relationship to the waterways and stories of what lived there in terms of native flora

and fauna including now endangered species. For example, stories told of karearea, wananga, at their kainga, through korero over kai and cuppa tea.

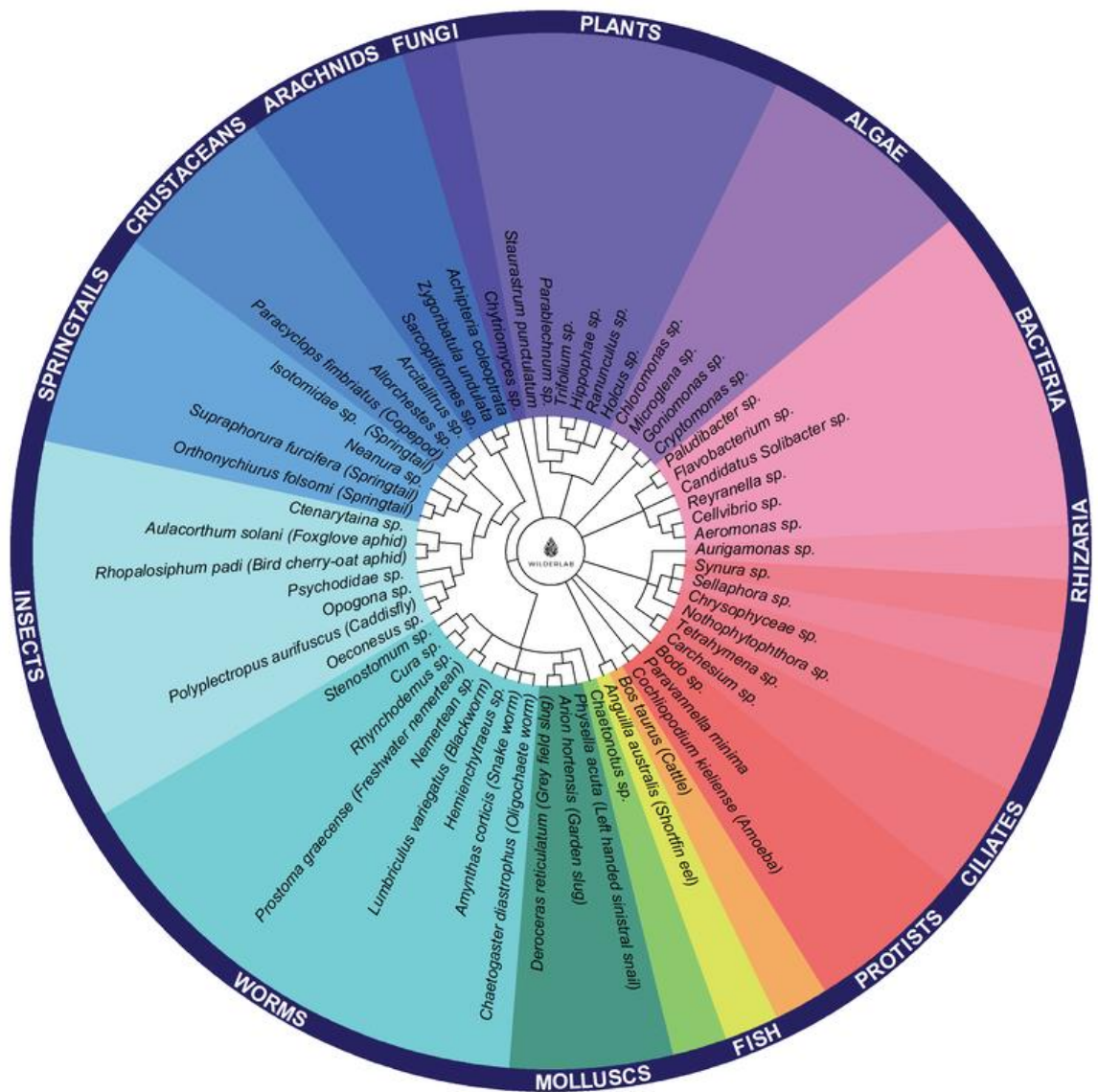
### **Deliverables and key outcomes**

1. The project [team purchased and planted](#) Ngutukaka, toetoe and riparian species during Autumn-Winter 2024, including 800 kahikatea. Releasing and pest control ensured 90% survival of the planting.



2. The project team completed [e-DNA species sampling and documentation](#), with results available on our website. MPI, GDC and MFE have agreed to provide Mangaparae Papakainga with new eDNA kits for 2025 to test upper Waipaoa and Urukokomoka rivers.





3. [Mangaparae raranga Wananga](#) to present findings and project was hosted in August at Mangatu marae and at Te Whare Piringa Mangapārae Papakainga attended by 30 weaver practitioners to share indigenous harvesting knowledge, weaving methodologies, maramataka and ecological restoration achievements.



4. Bird count and recording was done during the Te Ohonga wananga which included a trip to Areoma Maunga. Two significant and unexpected bird observation events happened. Sightings of Koekoeā and one Kārearea sighting. 300% increase of kereru, tui, tiwaiwaka and also weka





5. Trapping program: Predator control. Established 6km of site-specific information-informed traplines, self-resetting traps, or bait stations. volunteers training to handle the equipment. create borders and prevent reinvasion.





**Summary of contractor, volunteer and community involvement (an idea of numbers and hours if possible, otherwise a summary is fine)**

Hectares of predator control 6

Hectares treated for weeds 6

Hours of active monitoring 1500

Metres of new fencing 30

Number of community events 2

Number of indigenous plants planted – specify if any threatened species 2000

Number of other groups actively working with 15

Number of volunteer hours 6000

**Details of any reports, publications, printed materials produced as a result of the project**

**Report: [Mangapārae report weaving wananga](#)**

**Report: [Wai o mangaparae restoration 2024](#)**

**Submission: [nga-uri-o-urikore-tamanui-submission-april-2024](#)**





**Details of any media on the project**

WWF website International [Wetland feature Mangapārae Papakainga](#)

Gisborne District Council [feature/reporting](#)



### **Budget statement detailing expenditure of funds**

Total budget \$13,500.00

Wananga Whakatipu whenua program \$11,500

Volunteer support planting and trapping \$2,000

Total expenditure \$13,500.00

### **Health and safety reporting**

- Any training provided to employees, volunteers or contractors: *Tikanga wananga*

- Any safety improvements made *N/A*

- Any new hazards identified, and steps taken to manage them *N/A*

- Any details of any significant changes to their health and safety plan for this project *N/A*

- Any incidents: *None*